



TURING

SCHEME

The UK's global programme
to study and work abroad

The Turing Scheme

Webinar for Schools

09 March 2023



Funded by
UK Government

Welcome

This webinar is being recorded

In the interests of webinar quality please set
your microphone to mute and turn off cameras

Thank you



Speakers



Martin Cunliffe

Communications
and Stakeholder
Engagement

Department for
Education



Jane Davis

Headteacher

Lanchester EP
Primary School,
Durham



William Aitken

Progress Manager

Accrington
Academy



Lee Gibson

Senior
Marketing &
Communications
Manager

Capita

Agenda

1. Welcome
2. Introducing the Turing Scheme for schools - (DfE)
3. Funding opportunities for schools (Capita)
4. Case study - Lanchester EP Primary School
5. Case study - Accrington Academy
6. How to apply - (Capita)
7. Questions & Answers - (Capita)



Introducing the Turing Scheme for Schools

Martin Cunliffe,

Department for Education



Capita

**Funding
opportunities for
Schools**

Funding opportunities for schools

Every school based in England and Wales from primary through to secondary level is eligible to apply for funding as part of the Turing Scheme.

Short term placements

- 3 days to 2 months
- Mostly classroom based

Long term placements

- 2 to 6 months
- Participants must be 14 years or older

Additional support

- Participants defined to be from a disadvantaged background
- SEND participants

Funding opportunities for schools

An amount of funding will be provided to go towards the general cost of living for each participant.

Pupils and accompanying staff on a school placement to any destination will receive:

£53 per day for the first 14 days and £37 a day from the 15th day onwards

An amount of funding will be provided to go towards the direct costs of travel for a placement.

School participants from defined disadvantaged backgrounds will receive actual costs for additional travel expenses, including costs of visas, passports, and health insurance.

For participants with SEND, the scheme will fund up to 100% of actual costs for support directly related to their additional needs.

This funding will also cover preparatory visits by the sending organisation to carry out risk assessments and ensure participants will be able to equally access and take part in all elements of a placement.

Pre-visits can be for a maximum duration of three days, and funding can be used for both learners and accompanying staff.

Why should schools apply?

Offer life-changing experiences for your pupils and increased exposure to the world beyond their national borders - learning about new cultures and expanding their world view and improving their engagement and confidence

Fund existing school trips with the wide range of supported costs and remove the burden from budgets and parental contributions

Provide pupils with focused time to gain a deeper understanding of topics they are studying adding relevance to their learning. Improved engagement in learning and raised aspiration. Experiential learning at its best

Enhanced relationships - greater rapport and personal connections between pupils and their teachers, their peers and the new relationships they form on the visit. This can lead to increases in learning motivation and collaboration

Accompanying teachers are exposed to new and different pedagogical practices and curriculum approaches. They experience working in an informal teaching environment leading to enhanced innovation



Case study

Jane Davis,

Headteacher

**Lanchester EP Primary
School, Durham**

Turing Scheme

Lanchester EP Primary School
County Durham

Turing Scheme Ambassador School

Jane Davis – Head Teacher

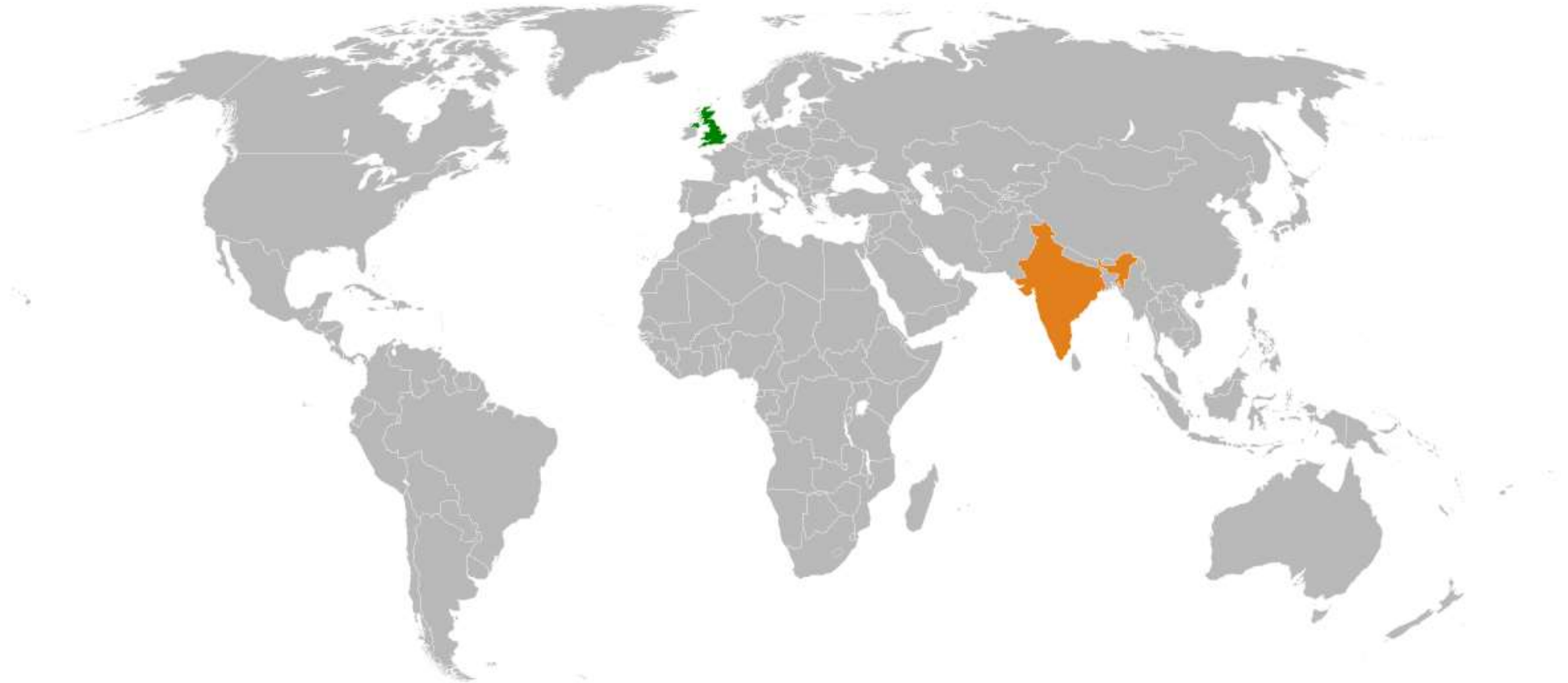


January 2023

Rajkot, India



Turing Scheme at Lanchester EP





Newcastle International Airport

16 January · 🌐

...

22 members of the Lanchester Primary School in Durham started their trip of a lifetime to Rajkot, India from Newcastle International Airport! ✈️

This was funded by the [Turing Scheme UK](#) which gives schools the chance to learn abroad! After 3 flights and almost 24 hours of travelling, the team arrived safely yesterday 💜

TW: @LanchesterEPPrimarySchool



👍❤️👤 You, Jane Davis, Sharron Davis and 3.4K others

420 comments 83 shares



















February 2023

Dubai, UAE

TURING

SCHEME



Turing Scheme at Lanchester EP































Planning Visits

- Communication is key – get the parents and carers on board
- Start planning as soon as the funding is agreed
- Work with your partner school to organise the visit and agree a timetable
- Go on a pre-visit if SEND adaptations need to be made (apply for this funding as part of the application)
- Airlines like BA and Ryanair have group booking options
- Plan everything in minute detail but be prepared to change plans!
- Keep parents and carers informed throughout it all!



Case study

**William Aitken,
Accrington Academy**



The Turing Scheme

Accrington Academy – 2022/23

Truth



Effort

Our Values:

T.E.A.M

Ambition



Manners



Applying for the scheme

- Agreeing to apply with your school
- Finding a partner
- Writing the Application
 - Global Britain
 - Levelling Up
 - Developing Key Skills
 - Value for UK Tax Payers



Organising Events

- Picking the Students
- Communicating with Partners
- Communicating with Parents
- Finding Flights
- Finding Accommodation
- Booking Activities
- Organising Paperwork
- Budgeting – including claiming expenses



AA Cultural Visit to Malawi - 2023 - Amazing Opportunity

This form has been created to allow all students a fair and equal chance to apply for one of the limited places on our forthcoming school project to Malawi, Africa, in early 2023, funded through the Turing Scheme. Please fill in all questions with as much detail in order to improve your chances of being selected for this 'once in a lifetime opportunity'. The trip will be for ten students and will take 12 days (including travel). The purpose of the trip is to improve cultural relations and enhance life opportunities for our young people.

The trip will also involve a lot of community work beforehand alongside the Accrington Rotary Club and their youth Interact group which we will establish in school.

The trip will involve being based in the Bishop McKenzie International School in Lilongwe, Malawi, and will involve teaching their younger students about UK culture as well as learning about local culture. This school is a world known for producing high levels of education and is one of the best schools in the African continent.

There will also be visits to help out at the Refugee Camp in the area, as well as, hopefully and price permitting, the chance to take part in an authentic African Safari.

You will also be required to make your own way to Manchester Airport to meet the group and your own way home.

Please note that if you use a mobile phone to answer the questions below, you can use the microphone feature to speak in your answers. Please also note that if you require assistance in completing this form, Mrs Carabine has kindly offered to help, as will any of your teachers.

Vaccination info here: <https://www.fitfortravel.nhs.uk/destinations/africa/malawi/#Vaccinations>

Covid details: <https://www.gov.uk/foreign-travel-advice/malawi/entry-requirements>

Bishop McKenzie School: <https://www.ibo.org/en/school/000960>

3. Why do you want to apply for this trip? *

Enter your answer

4. What part of this trip appeals to you most and why? *

Enter your answer

5. What worries you about going on an trip like this? *

Enter your answer

6. What special qualities could you bring to the activities we will be doing?

Enter your answer

7. What do you think you would get out of this trip personally and how will it enhance your life opportunities?

Enter your answer

8. Are you prepared and willing to help out in our local community through Accrington Rotary Club both before we go and after we return (with your newly acquired skills) and how would you do this? *

Enter your answer

9. What kind of local community activities do you think you would like to get involved with? *

Enter your answer



Organising Events

- Picking the Students
- **Communicating with Partners**
- Communicating with Parents
- Finding Flights
- Finding Accommodation
- Booking Activities
- Organising Paperwork
- Budgeting – including claiming expenses

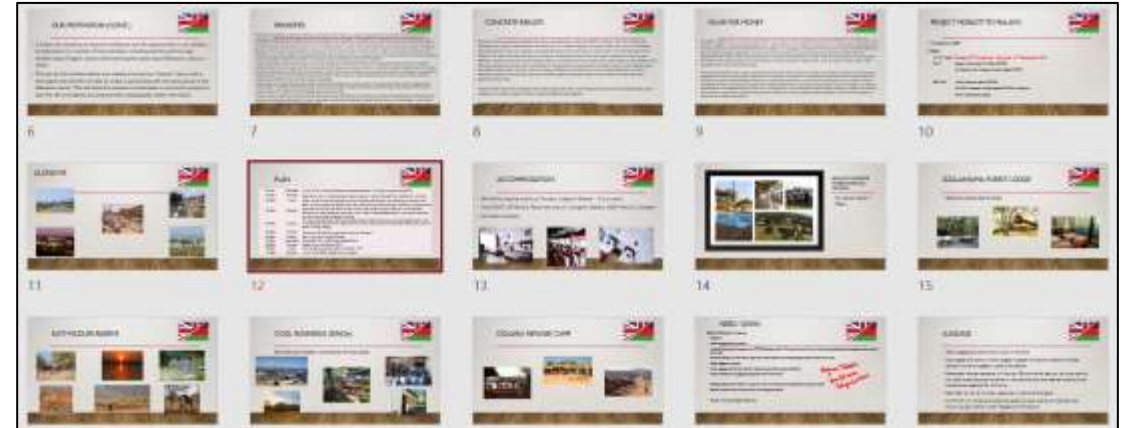
A	B	C	D	E	F	G	H	I	J	K
Day	Date	Day	Activity							
1	29-Nov	Tuesday	Meet at school at 1.30pm, depart at 2.00pm for T2 Man Airport. Depart UK at 19.30							
2	30-Nov	Wednesday	Arrive 12.50 in Lilongwe. Check into accommodation - have evening meal and settle in.							
3	01-Dec	Thursday	Experience a day in school going to regular classes. Service plan 13-4 Where: BOS What: Building a reciprocal partnership Leaders from Each Service to give a brief introduction of their activity. Accrington students will select a specific service they are keen on partnering with. We will go into a Service cycle session and ask students to use their chosen activity as their issue, they will propose ideas and objectives for their chosen activity. Once back in the UK as we move into Service activities for next semester (January) they will begin to liaise with their chosen Service activity every Wednesday. (We can assign them buddies in Y10 as well.)	Lesson 1: Y11 Arts	Lesson 2: Y11 Arts	Lesson 3: Service AMD	Lesson 4: Service AMD/XLE	Lesson 5: Math PLR PMP	Lesson 6: Y11PHE	Lesson 7: Y11PHE
4	02-Dec	Friday	R & L Farms/Game Ranch with animals and Golfarts	Tickets booked/confirmed for the performance that evening, starting at 6pm in the Upper Hall. Dress code: festival/carnival theme or a fun hat! MAX \$500/ticket (approx \$4.50). Please bring cash to pay at the door.						
5	03-Dec	Saturday	Early morning head off to Dzalianyama. We'll head into the school and get involved in a project there organised by Land & Lake. Enjoy a local lunch at the school and then head off in the afternoon Dzalianyama Forest Lodge to overnight with all meals included. Depending on time, open afternoon to walk, hike or bike to explore the area.							
6	04-Dec	Sunday	This morning head from Dzalianyama back through Lilongwe and on to the lake, stopping off in Kuti Wildlife Reserve (Salima) for a game drive and walk/ cycle, then off to the lake. Head across then to Cool runnings (Bergal) on your own arrangement.							
7	05-Dec	Monday	Working with Cool Runnings then return to Lilongwe							
8	06-Dec	Tuesday	Day with Primary School Children	We need to plan this - can speak to school for ideas on the Thursday						
9	07-Dec	Wednesday	Kitebe Day Tour to Dzaleka Refugee Camp							
10	08-Dec	Thursday	School Swimming Gala at BMIS, PYP school concert	Confirmed that kids will be allocated honorary members of houses and to wear specific colours						
11	09-Dec	Friday	Morning Quiz at school, depart Lilongwe 13.40							
12	10-Dec	Saturday	Arrive UK at 08.05, picked up from airport							





Organising Events

- Picking the Students
- Communicating with Partners
- **Communicating with Parents**
- **Finding Flights – Covid Passes – Visas**
- Finding Accommodation
- Booking Activities
- Organising Paperwork
- Budgeting – including claiming expenses





Organising Events

- Picking the Students
- Communicating with Partners
- Communicating with Parents
- Finding Flights – Covid Passes – Visas
- **Finding Accommodation**
- **Booking Activities**
- **Organising Paperwork**
- **Budgeting – including claiming expenses**

A	B	C	D	E	F	G	H	I	J	K	L	M
		Granted	£ 22,632.00	Used		Left Over		Funding Awarded				
								Learners		6360		
		Project management AA	£ 3,780.00	£ 3,900.00		-£120.00	Staff			1272		
		UK pupils -> Malawi 2023	£ 18,492.00	£ 18,509.00		-£17.00	Cost of Living			7632		
			£ 22,632.00				Exceptional Costs (VISAS)			360		
							Total Living Payment			7902		
							Org Support			3780		
							£0.00	Travel Costs		10860		
		Total Budget				Budget	£22,632.00	Total		22632		
		Accrington	£ 22,632.00			Remaining	£22,632.00	Total Given		22632		
		Exchange Rate	1.13									
		Received	22-Nov-	2024				Flights (28th-9th - Ethiopian)	12	950.11	£	11401.32
								Visa	12	45.28	£	543.36
								Total Travel				11944.68
								Extra Visa				50



When on Project

• Activities

- Visits to school
- Helping with Orphanage
- Painting Local Orphanage School
- Upcycling and recycling project
- Visit to Safari
- Stay over in Jungle Lodge



When on Project

• Activities

- Visits to school
- Helping with Orphanage
- Painting Local Orphanage School
- Upcycling and recycling project
- Visit to Safari
- Stay over in Jungle Lodge



Truth



Effort

Our Values:

T.E.A.M

Ambition

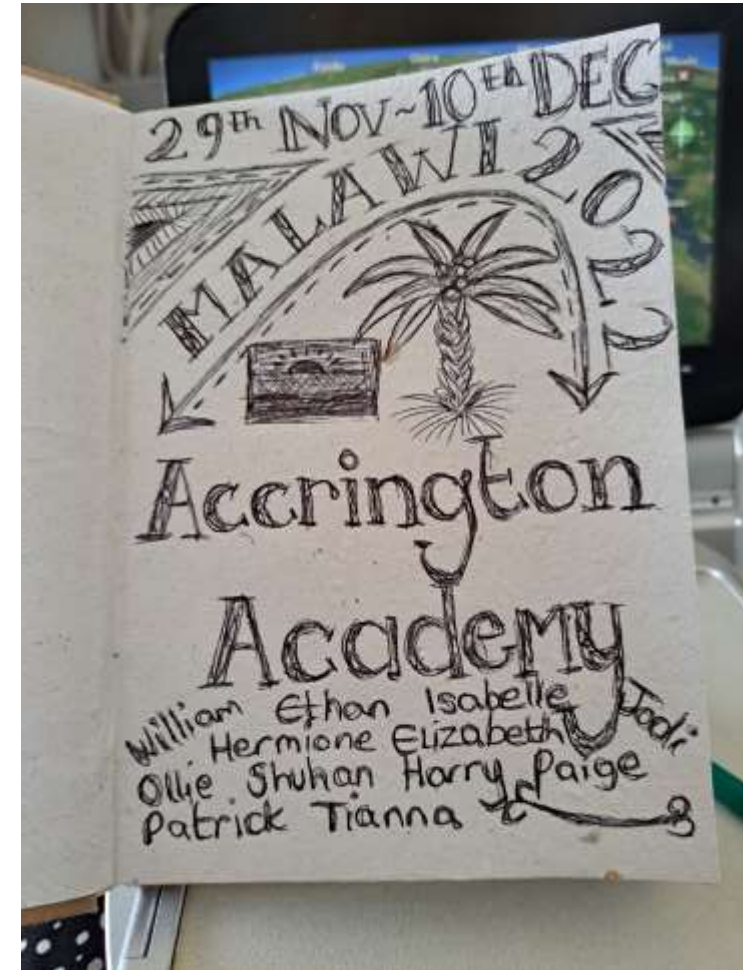


Manners



Further Work

- Maintaining Partnerships
- Continuing Work in School



Thank you

- Any Questions

- www.aaturing.weebly.com

Truth



Effort

Our Values:

T.E.A.M

Ambition



Manners

Capita

How to apply

The Turing Scheme application

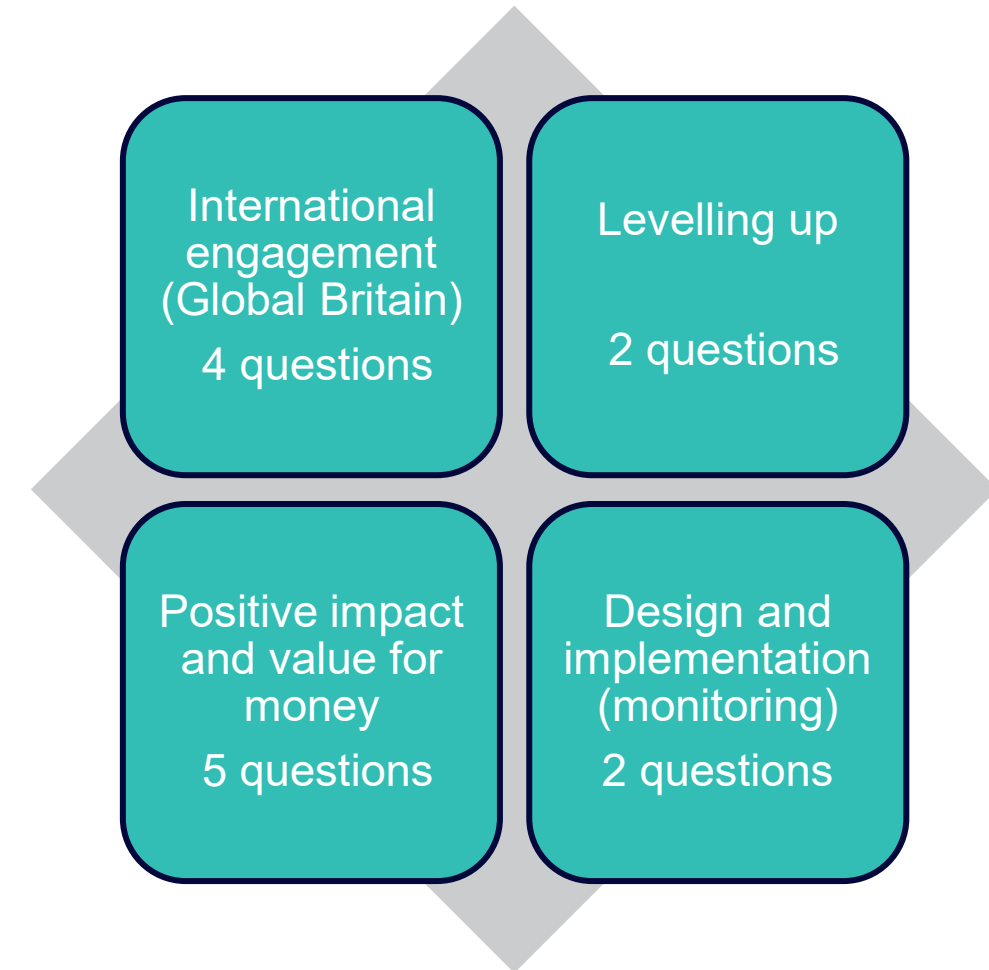
Applicants will answer qualitative questions under **four** distinct sections

Each section has an allocated maximum possible score (between 20 – 30).

Questions that require a narrative answer have a 500-word limit. Further guidance on what to include in written answers can be found in the Application Guide.

The Application Guide provides you will all the information you will need to gather when planning your application mobility groups

The application will then go through an independent assessment by trained assessors from our partner the Association of Commonwealth universities.



Finding an international partner

Eligible receiving organisations for schools

The host partner organisation(s) must be a non-UK school (or in the case of applicants in British Overseas Territories, outside of the British Overseas Territory in question)

It must be an institution providing general, vocational, or technical education on any level from primary to upper secondary education

There are no restrictions on the country or territory in which the mobility takes place. However, FCDO travel guidance must be adhered to. It is the responsibility of the Grant Recipient to assure FCDO adherence



Finding an international partner

Act now to identify and agree your host partner relationship



Use your
existing
relationships
and links to
schools abroad



Engage with
your local
council
regarding town-
twinning



Utilise your
local
Universities
who have
experience in
outward
mobilities



Contact cultural
organisations
and embassies
who can
facilitate
introductions



Research
previous case
studies

Top tips for a successful application

01

Read the programme guide

The programme guide provides all the information you need to check your eligibility for funding and how to apply

Use all the application support resources available

02

Know your priorities

Consider the scoring qualitative criteria when focusing time on application responses

03

Plan Ahead

Collaborate with colleagues and host partner organisations to create a realistic plan that will deliver your project objectives

04

Structure your thinking

Writing a subheading to introduce different sections within each of your answers will help assessors follow your narrative

05

Work smartly

If there is information you would like to provide that you think is relevant to more than one application section, cross reference it instead of copying and pasting the same text multiple times.

06

Before you submit

Take a note of your unique application ID and check your application thoroughly

Applications may not be resubmitted - we will accept the first submission of an application only

The Turing Scheme key dates

These are the final dates for the registration, application and application outcomes

**Application window
is now live**

14 February 2023

**Application window
closes**

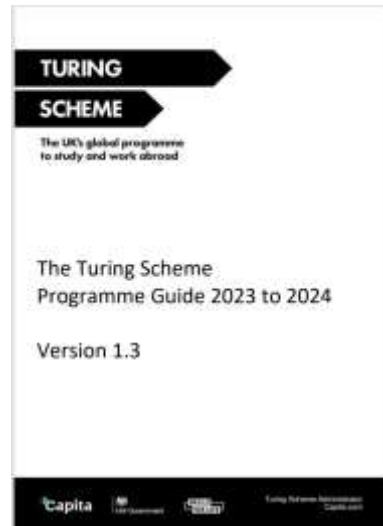
6 April 2023

**Application
Outcomes
communicated**

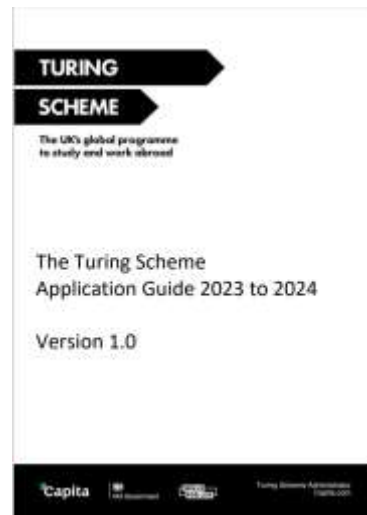
Summer 2023

The Turing Scheme support and resources

Here to help you succeed



Programme Guide



Application Guide



Promotional guide for schools



FAQs

Blogs

- [Top tips for applying for the Turing Scheme](#)
- [The benefits of the Turing Scheme for schools](#)
- [Top tips for finding an international partner](#)
- [Case studies](#)

Next steps

Prepare

View the supporting resources - programme and application guides

Talk to us - Contact our Service Centre for any help or advice

Plan your application and identify your mobility groups

Register

ACT NOW!

Visit www.turing-scheme.org.uk to register for the 2023 to 2024 scheme and access the application portal

Apply

The guided application process will steer you through each step

Save for later and continue as your application builds

Applications close 6 April 2023

Capita

Any questions?



**Thank you for
joining us today**